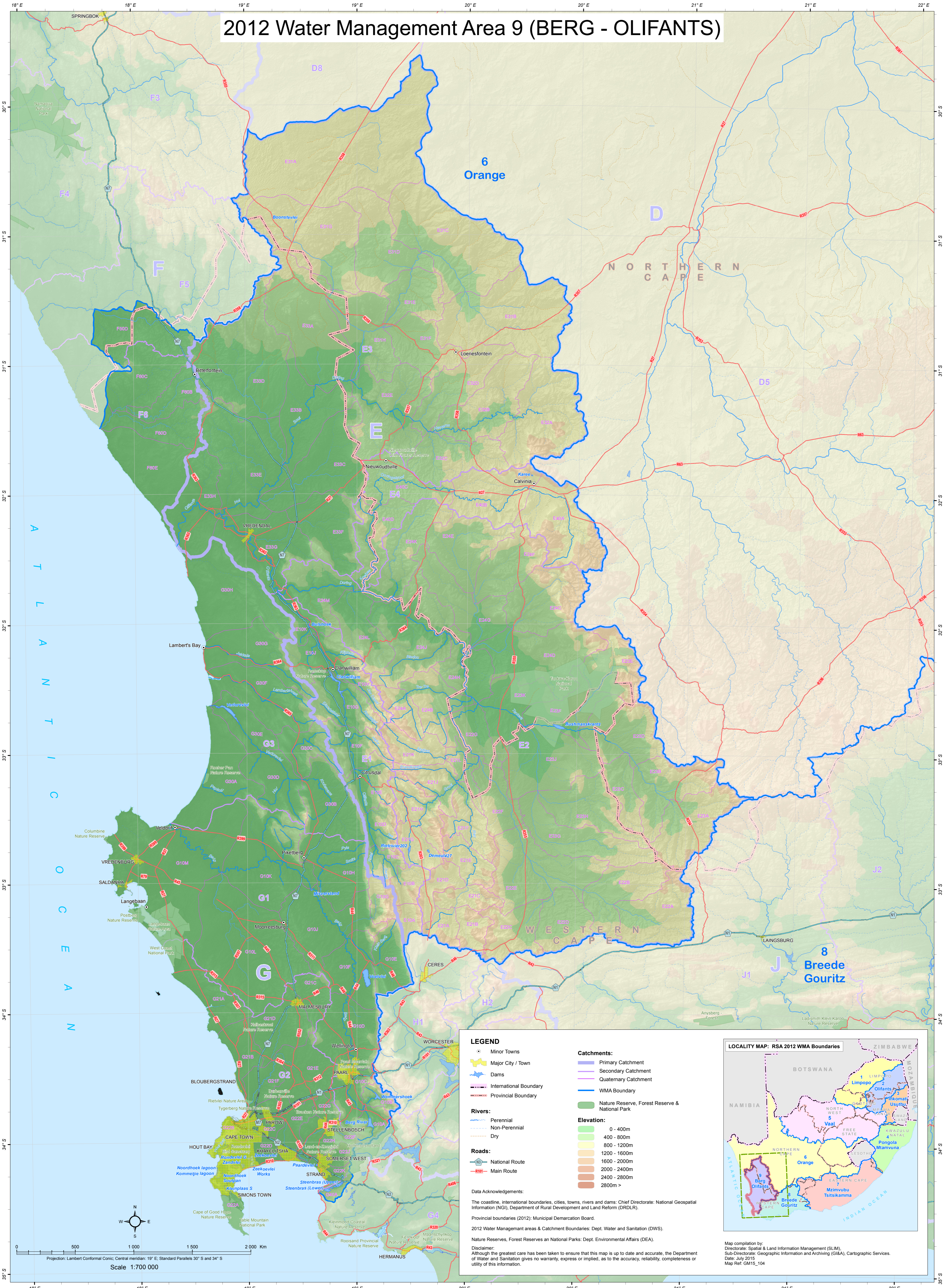


# 2012 Water Management Area 9 (BERG - OLIFANTS)



**LEGEND**

- Minor Towns
- Major City / Town
- Dams
- International Boundary
- Provincial Boundary
- Rivers:
  - Perennial
  - Non-Perennial
  - Dry
- Roads:
  - National Route
  - Main Route
- Catchments:
  - Primary Catchment
  - Secondary Catchment
  - Quaternary Catchment
  - WMA Boundary
  - Nature Reserve, Forest Reserve & National Park
- Elevation:
  - 0 - 400m
  - 400 - 800m
  - 800 - 1200m
  - 1200 - 1600m
  - 1600 - 2000m
  - 2000 - 2400m
  - 2400 - 2800m
  - 2800m >

Data Acknowledgements:  
 The coastline, international boundaries, cities, towns, rivers and dams: Chief Directorate: National Geospatial Information (NGI), Department of Rural Development and Land Reform (DRDLR).  
 Provincial boundaries (2012): Municipal Demarcation Board.  
 2012 Water Management areas & Catchment Boundaries: Dept. Water and Sanitation (DWS).  
 Nature Reserves, Forest Reserves and National Parks: Dept. Environmental Affairs (DEA).

Disclaimer:  
 Although the greatest care has been taken to ensure that this map is up to date and accurate, the Department of Water and Sanitation gives no warranty, express or implied, as to the accuracy, reliability, completeness or utility of this information.

